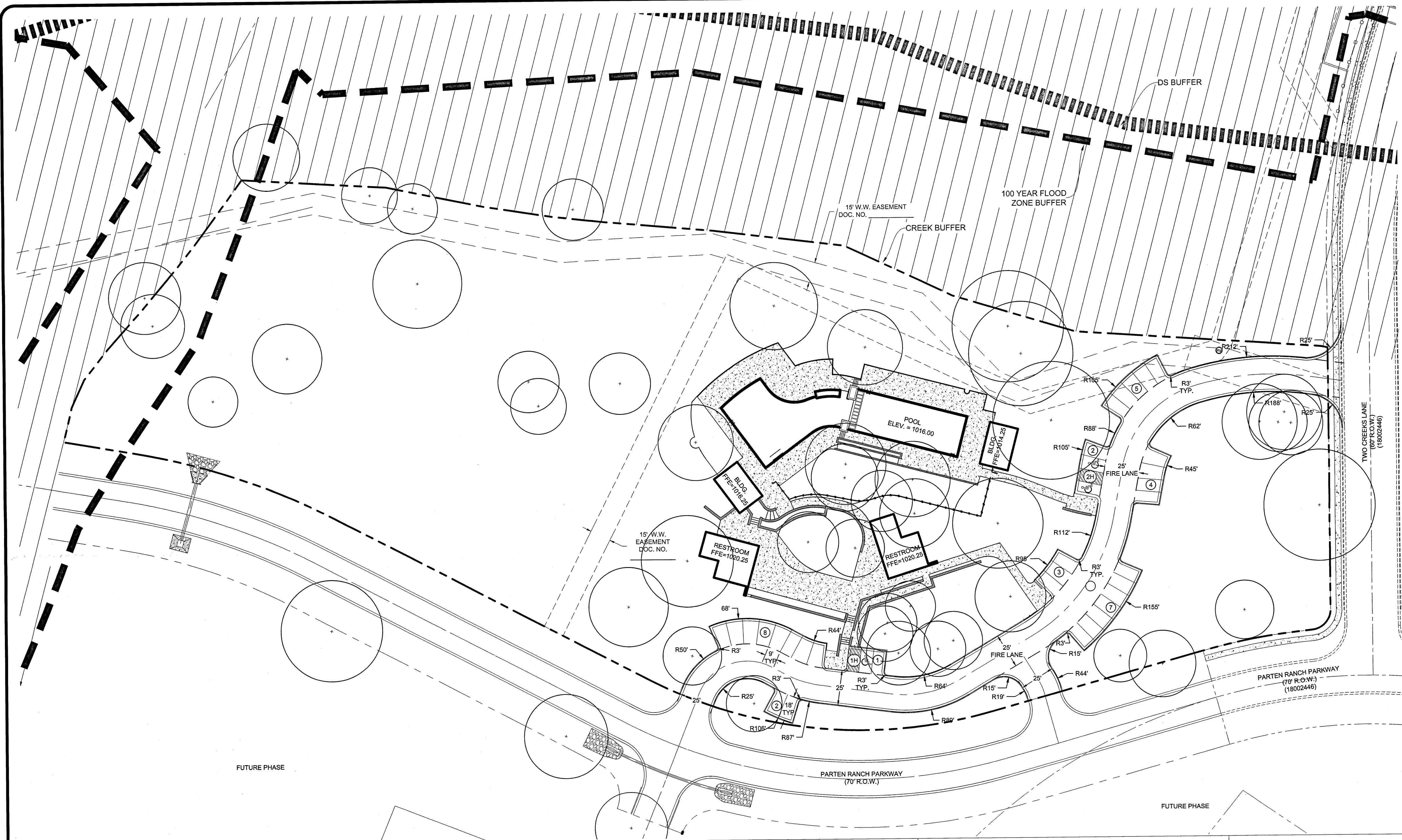


- NOTES:**
- ALL DIMENSIONS ARE TO FACE OF CURB UNLESS OTHERWISE NOTED.
 - ALL RADII ARE 3' UNLESS OTHERWISE NOTED.
 - ALL SIDEWALKS SHALL BE 5' WIDE UNLESS OTHERWISE NOTED.
 - ALL SPOT ELEVATIONS ARE TO TOP OF PAVEMENT UNLESS OTHERWISE NOTED.
 - ALL SIDEWALKS SHALL HAVE A MAX. RUNNING SLOPE OF 5%.
 - ALL SIDEWALKS SHALL HAVE A MAX. CROSS SLOPE OF 2%.
 - ALL PAVEMENT SHALL BE H.M.A.C. WITH CURB AND GUTTER.



I:\A311 Parten Ranch\A311 Amenity Center\Submittal Drawings\A311-0406_Site Plan.dwg
 User: jrooseok
 Date: 12/19/08
 Plot Date/Time: Feb 12, 10 11:32:18 AM

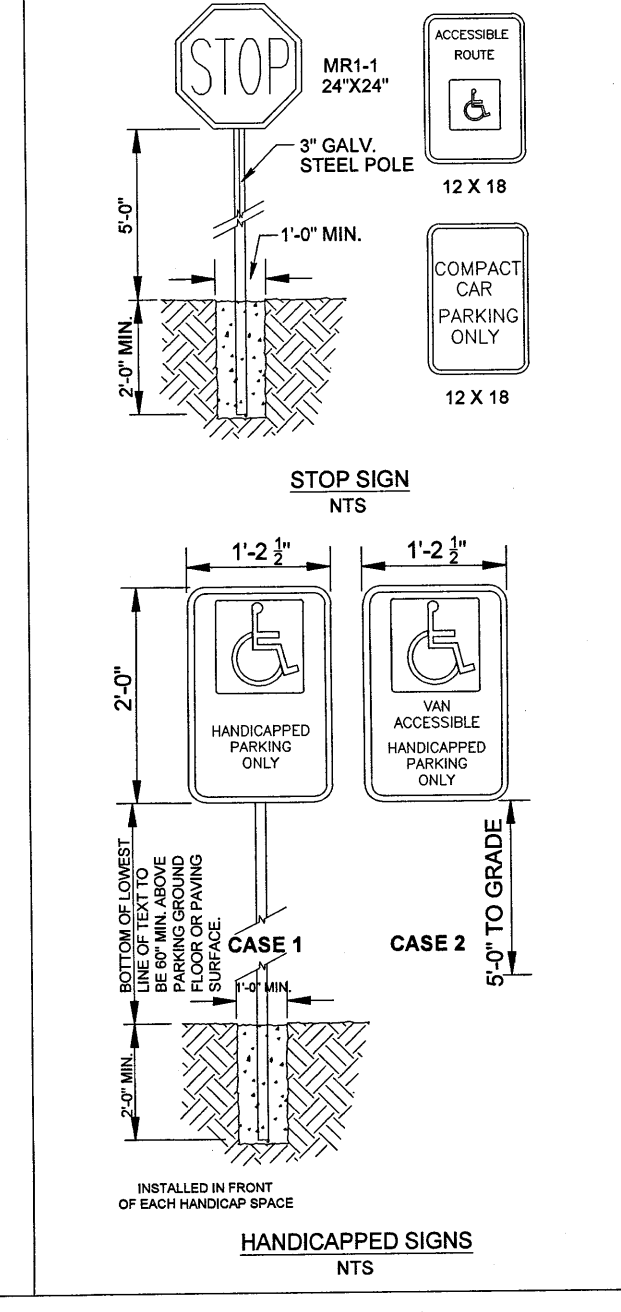
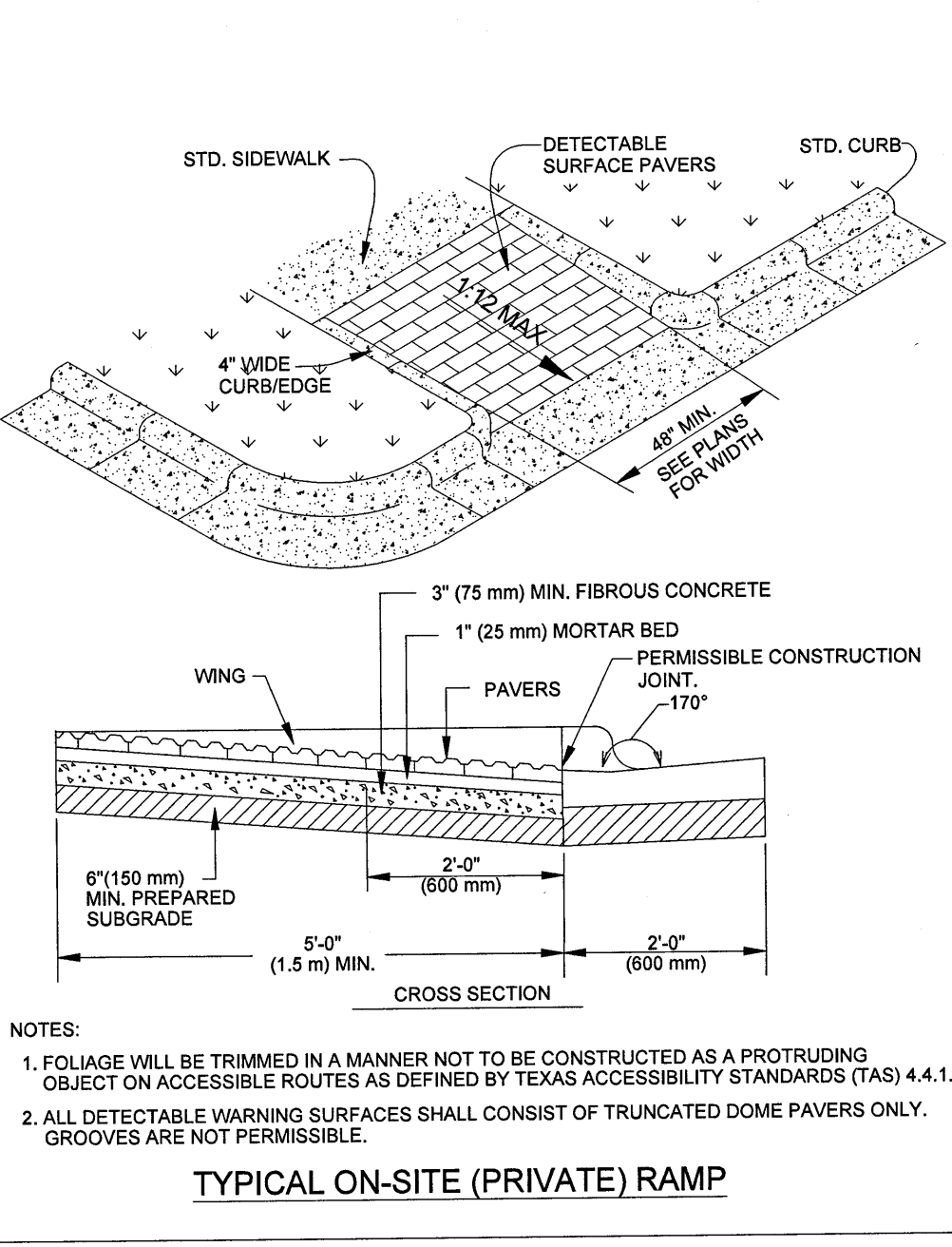
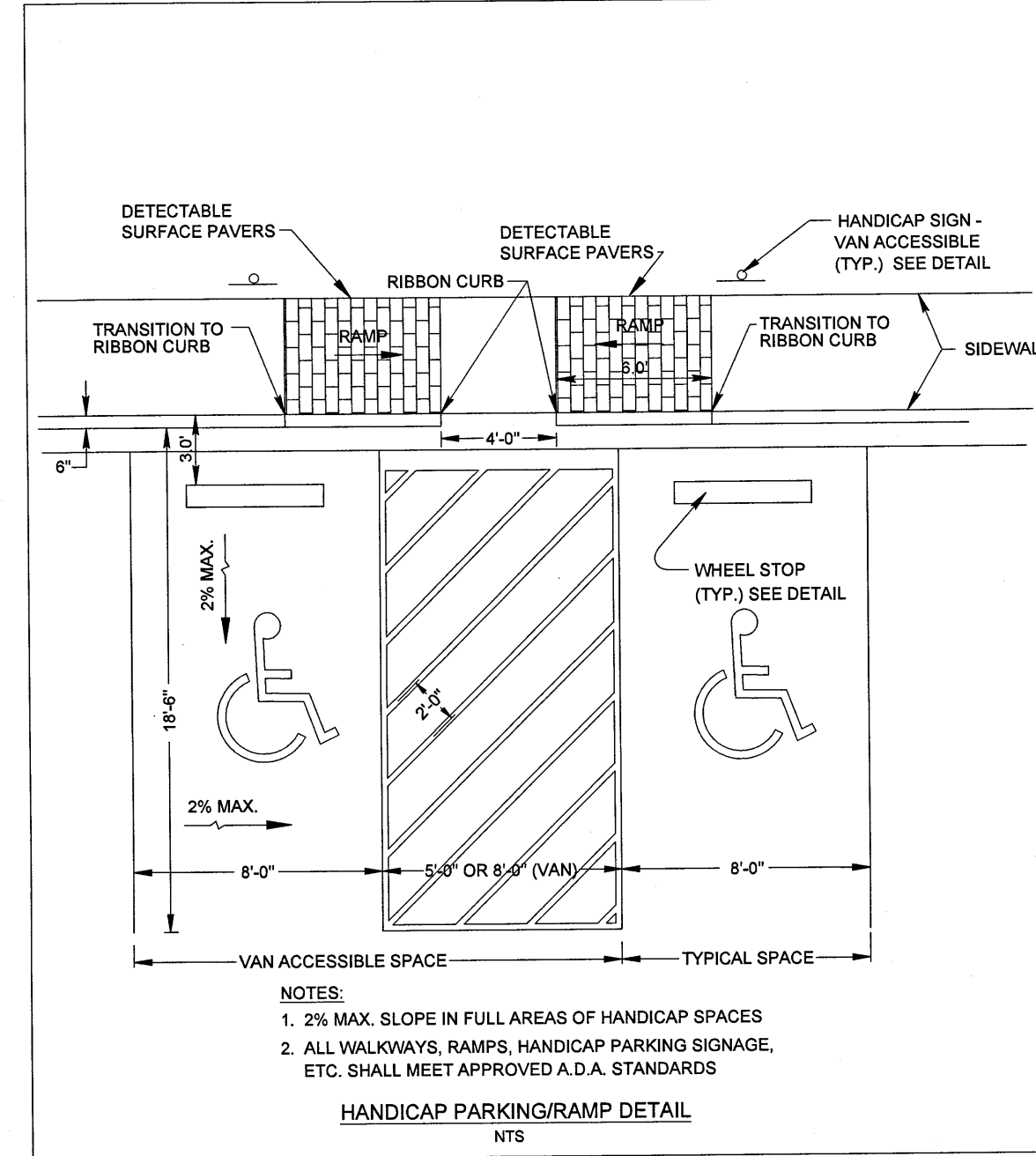
IMPERVIOUS COVER

| | |
|---|---------------|
| BUILDINGS (SQUARE FEET) | 3,386 |
| ASPHALT PARKING (SQUARE FEET) | 22,557 |
| SIDEWALKS/MISC (SQUARE FEET) | 15,274 |
| TOTAL IMPERVIOUS COVER (SQUARE FEET) | 41,217 |
| TOTAL IMPERVIOUS COVER (ACRES) | 0.95 |
| TOTAL GROSS AREA (ACRES) | 5.37 |
| TOTAL IMPERVIOUS COVER (%) | 17.7% |

TOTAL BUILDING COVERAGE = 3,386 SF
 TOTAL SITE AREA = 233,917 SF
 FLOOR TO AREA RATIO (FAR) = 69:1 (1.4%)

PARKING DATA

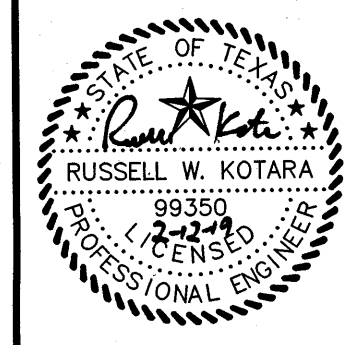
| TYPES | NUMBER OF SPACES PROVIDED |
|--------------------|---------------------------|
| REGULAR | 31 |
| COMP | 0 |
| ACCESSIBLE PARKING | 3 |
| TOTAL | 34 |



REVISIONS

| NO. | DESCRIPTION | DATE | BY |
|-----|-------------|------|----|
| | | | |
| | | | |

DATE: #/ #-18
 DESIGNED BY: XXX
 DRAWN BY: JDS
 CHECKED BY: DMR
 DRAWING NO.: A311-0406_Site Plan.dwg



LJA Engineering, Inc.
 5316 Highway 290 West
 Suite 150
 Austin, Texas 78735
 Phone 512-439-4700
 Fax 512-439-4716
 FRN - F-1386

Use One Call Utility System: Dial 472-2822, 48 hours BEFORE you dig

811
 Know what's below.
 Call before you dig.